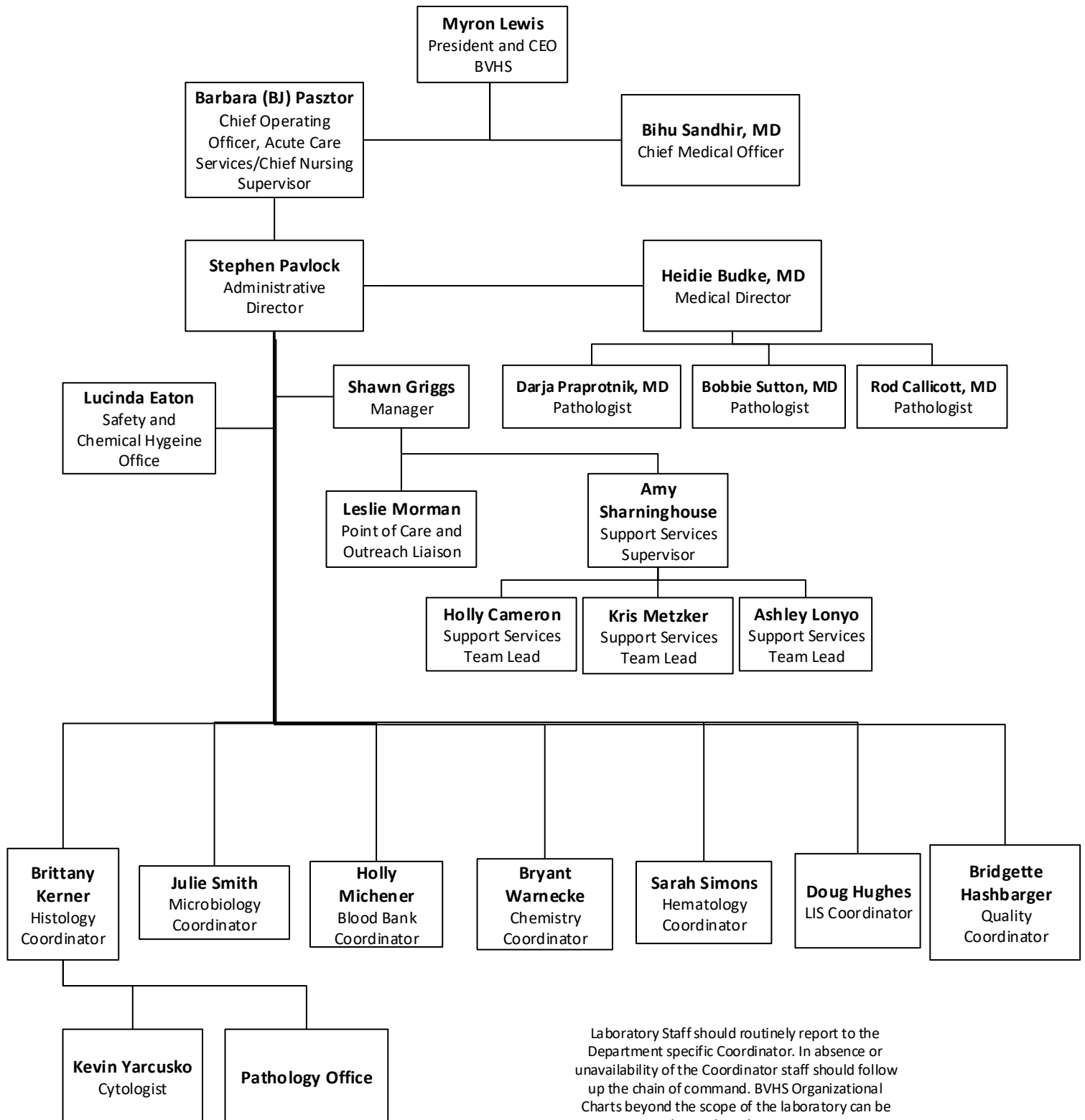
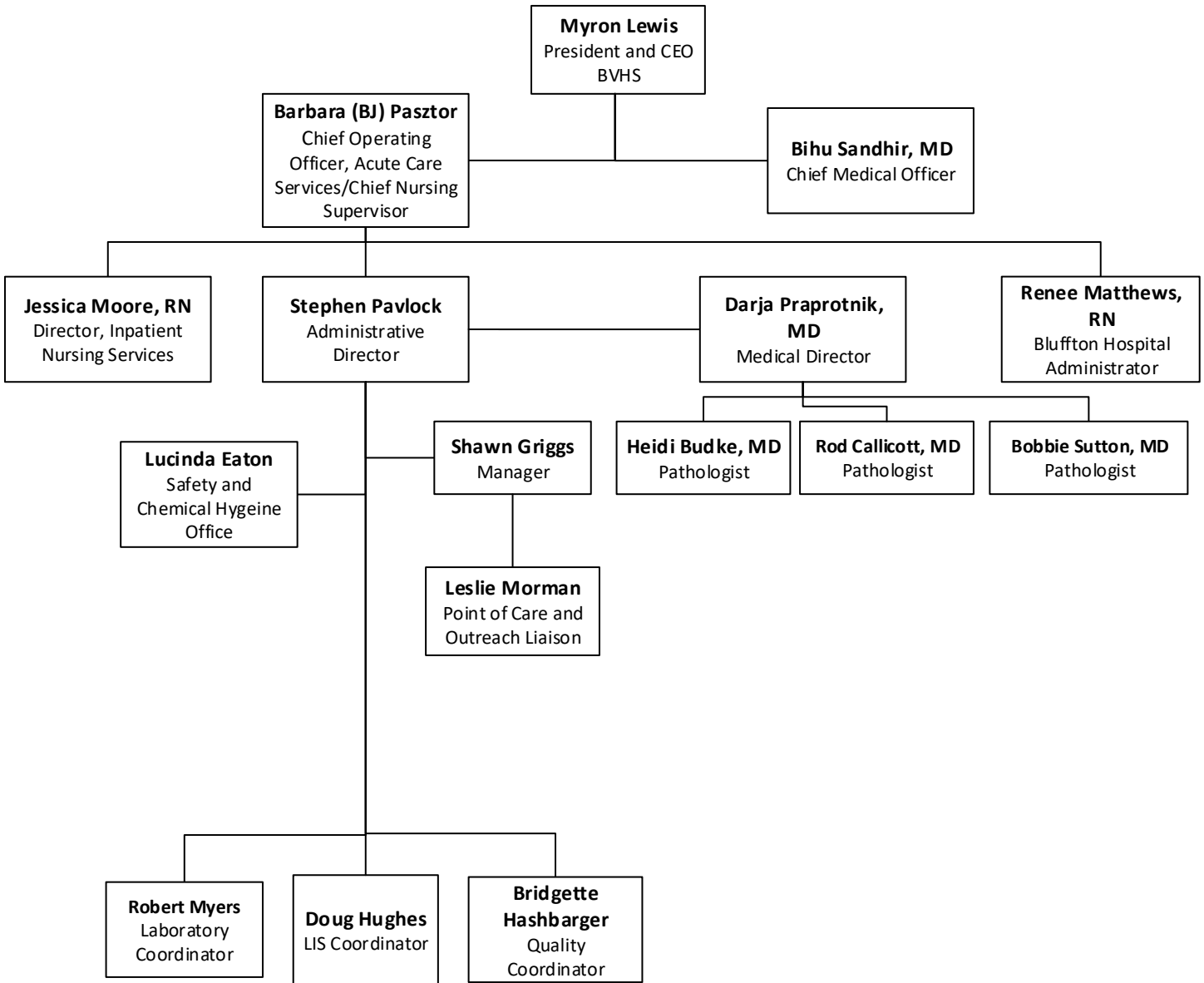


Blanchard Valley Hospital Laboratory
Organizational Structure



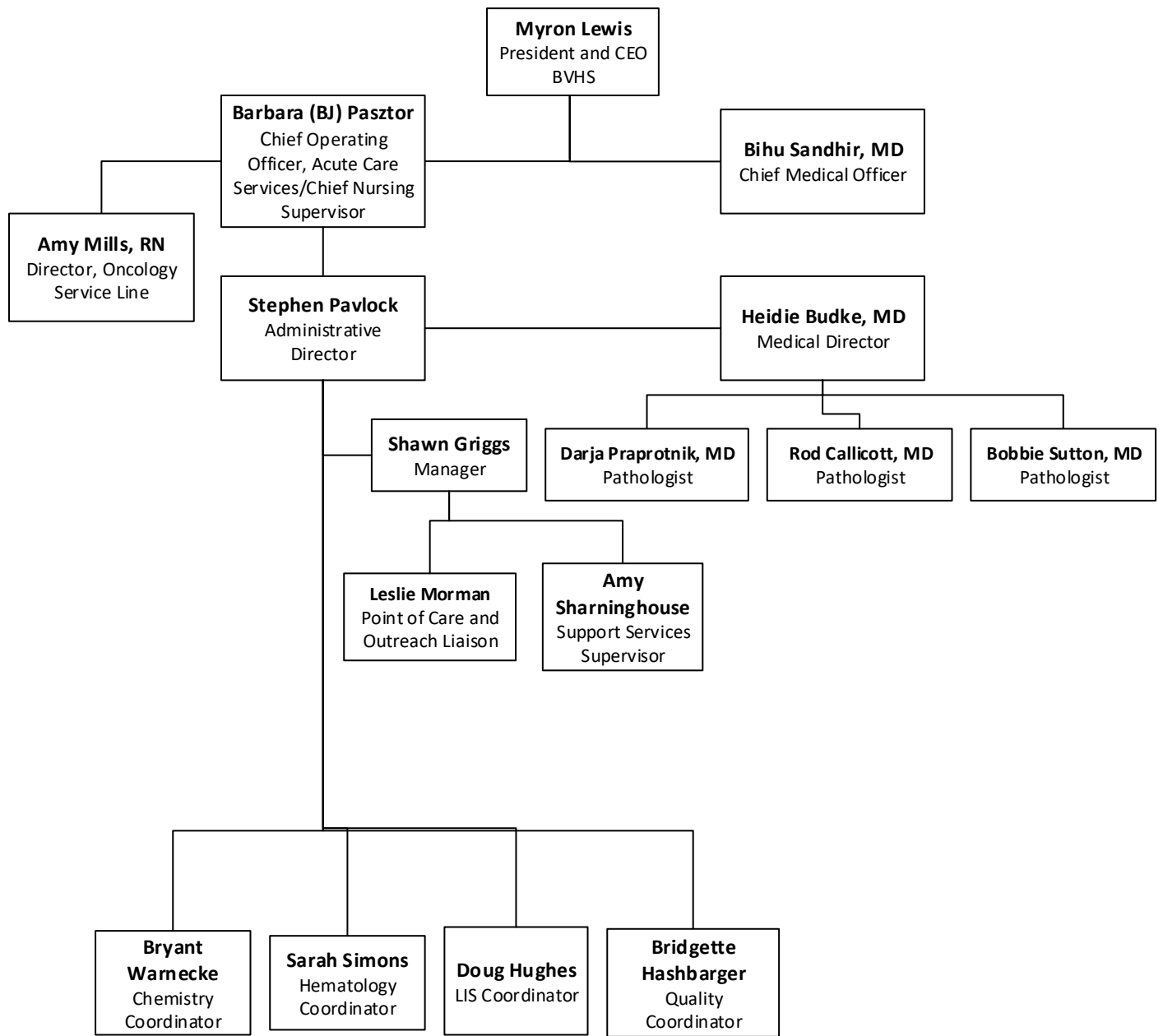
Laboratory Staff should routinely report to the Department specific Coordinator. In absence or unavailability of the Coordinator staff should follow up the chain of command. BVHS Organizational Charts beyond the scope of the laboratory can be located on The Core.

Bluffton Hospital Laboratory
Organizational Structure



Laboratory Staff should routinely report to the Department specific Coordinator. In absence or unavailability of the Coordinator staff should follow up the chain of command. BVHS Organizational Charts beyond the scope of the laboratory can be located on The Core.

Armes Family Cancer Care Center Laboratory
Organizational Structure



Laboratory Staff should routinely report to the Department specific Coordinator. In absence or unavailability of the Coordinator staff should follow up the chain of command. BVHS Organizational Charts beyond the scope of the laboratory can be located on The Core.